

 US Army Corps of Engineers Jacksonville District <b>SAFETY ON THIS JOB          DEPENDS ON YOU</b>	
Drawn By: <b>GHM</b> Checked: <b>DEC 2020</b>	Project: <b>ANNUAL EXAMINATION SURVEY FY21 30, 34, 38, 40 &amp; 42-FOOT PROJECT</b> Drawing no. <b>51</b>
Title: <b>PLAN</b>	Sheet: <b>51 OF 57</b>
Department of the Army Jacksonville District, Corps of Engineers Jacksonville, Florida	

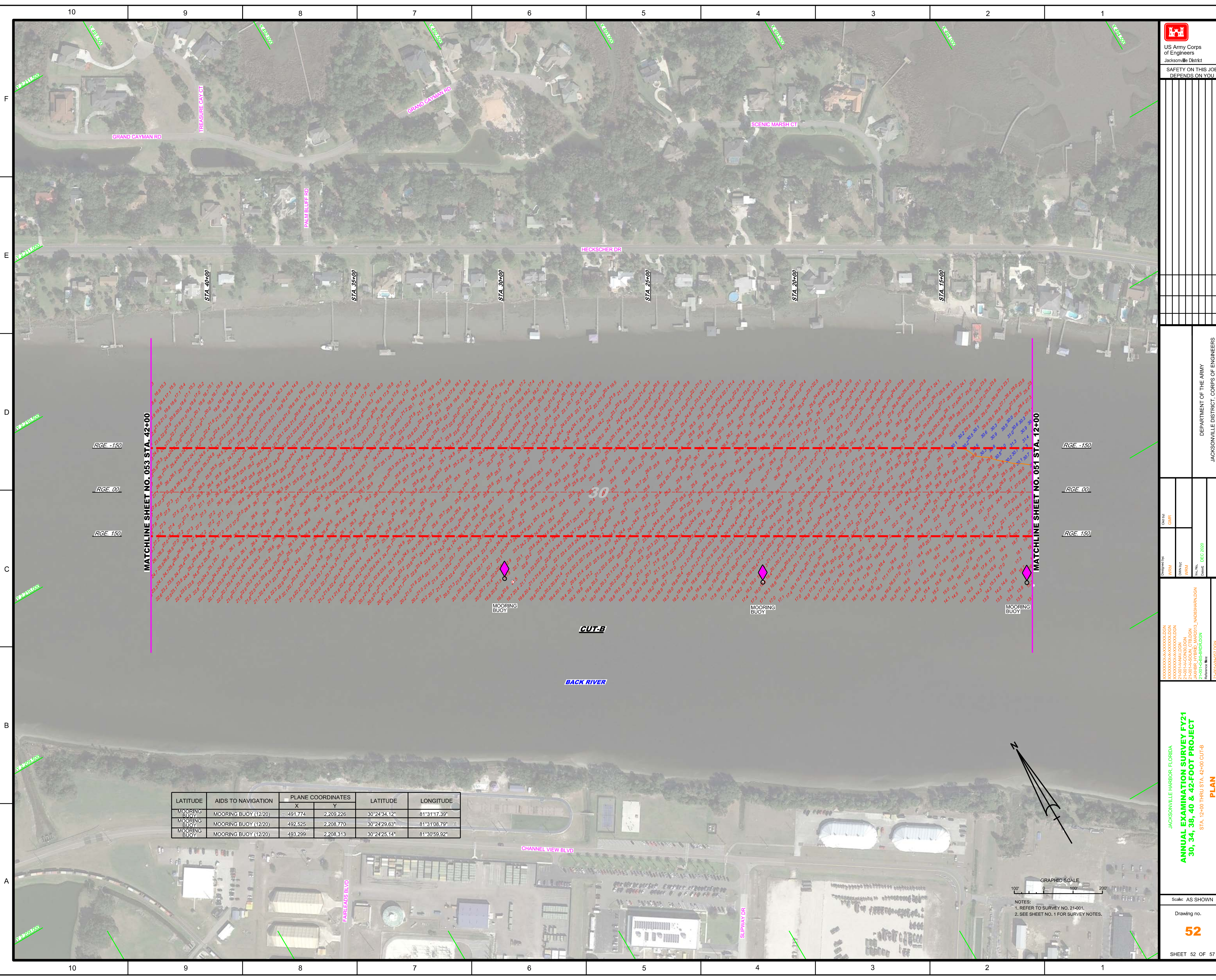
GRAPHIC SCALE  
 100' 0 100 200'

NOTES:  
 1. REFER TO SURVEY NO. 21-001.  
 2. SEE SHEET NO. 1 FOR SURVEY NOTES.

JACKSONVILLE HARBOR, FLORIDA  
**ANNUAL EXAMINATION SURVEY FY21  
 30, 34, 38, 40 & 42-FOOT PROJECT**  
 STA. 38+00 CUT-A THRU STA. 42+00 CUT-B  
**PLAN**

Scale: AS SHOWN  
 Drawing no. **51**  
 SHEET 51 OF 57





MATCHLINE SHEET NO. 053 STA. 42+00

MATCHLINE SHEET NO. 051 STA. 12+00

LATITUDE	AIDS TO NAVIGATION	PLANE COORDINATES		LATITUDE	LONGITUDE
		X	Y		
	MOORING BUOY (12/20)	491,774	2,209,226	30°24'34.12"	81°31'17.39"
	MOORING BUOY (12/20)	492,525	2,208,770	30°24'29.63"	81°31'08.79"
	MOORING BUOY (12/20)	493,289	2,208,313	30°24'25.14"	81°30'59.92"

US Army Corps of Engineers  
Jacksonville District

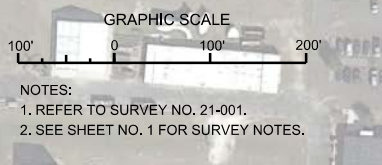
SAFETY ON THIS JOB  
DEPENDS ON YOU


DEPARTMENT OF THE ARMY  
JACKSONVILLE DISTRICT, CORPS OF ENGINEERS  
JACKSONVILLE, FLORIDA

Checked by: GHR  
Designed by: WRM  
Drawn by: WRM

JACKSONVILLE HARBOR, FLORIDA  
ANNUAL EXAMINATION SURVEY FY21  
30, 34, 38, 40 & 42-FOOT PROJECT  
STA. 12+00 THRU STA. 42+00 CUT-B  
PLAN

Scale: AS SHOWN  
Drawing no. **52**  
SHEET 52 OF 57

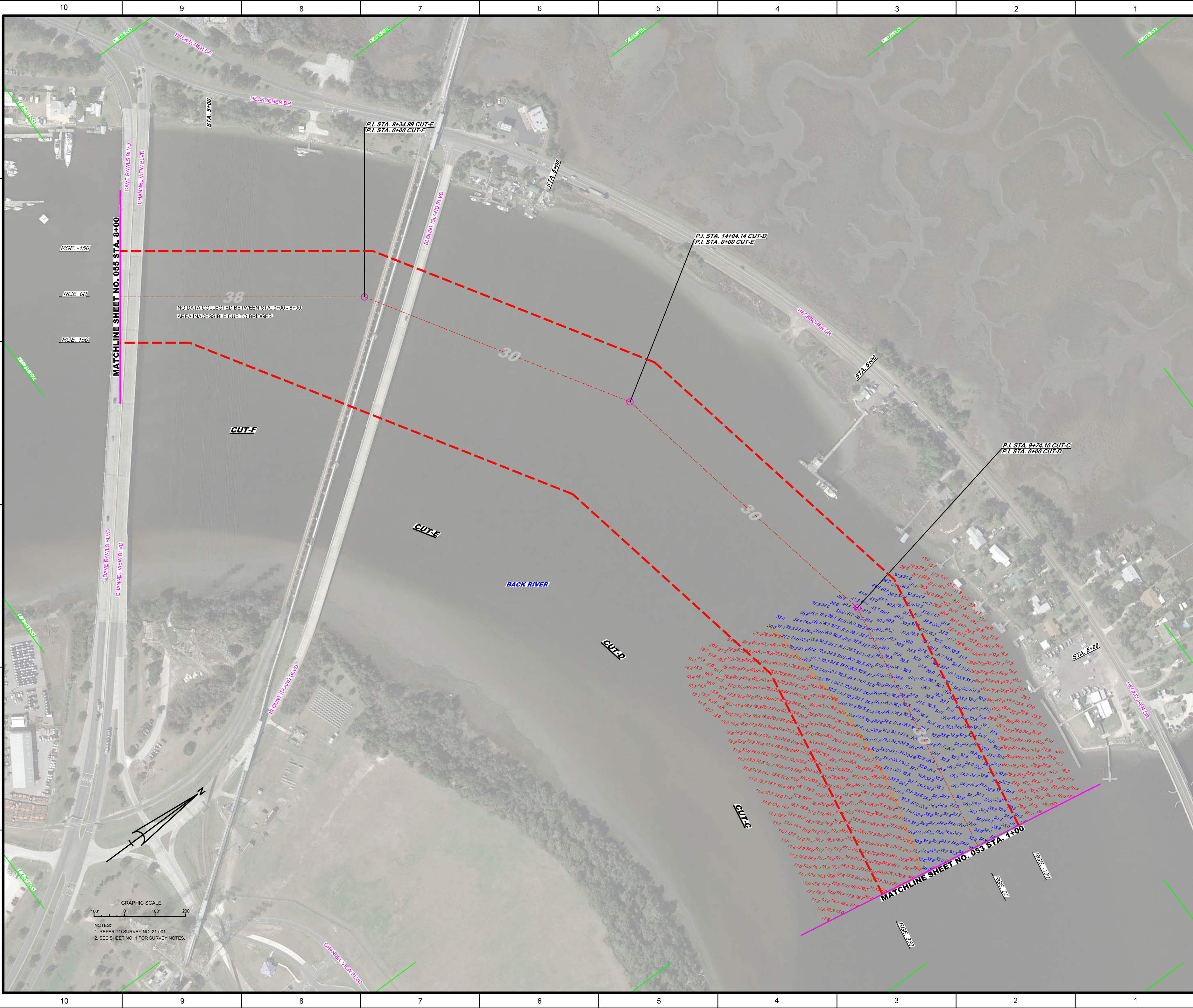


NOTES:  
1. REFER TO SURVEY NO. 21-001.  
2. SEE SHEET NO. 1 FOR SURVEY NOTES.







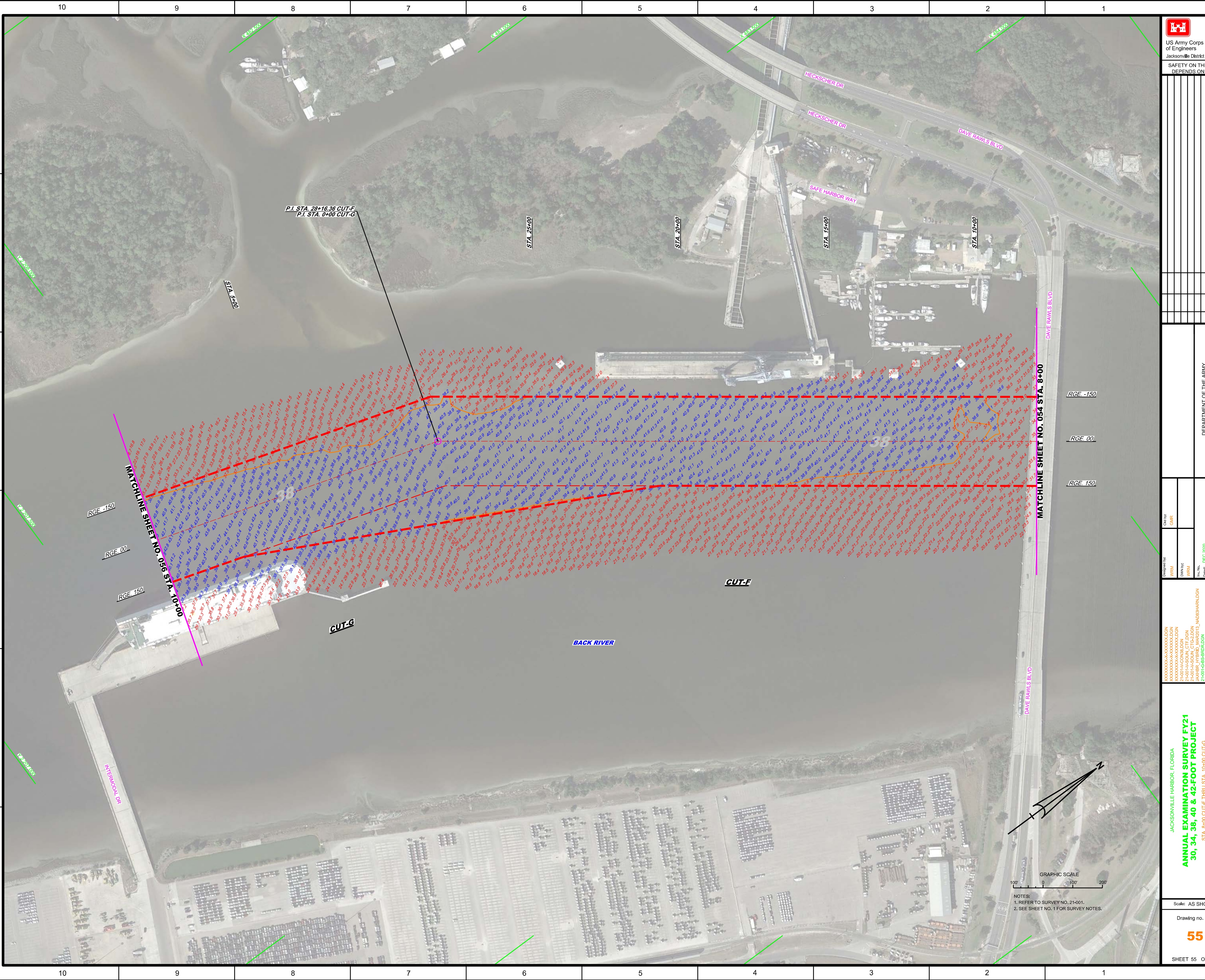


NOTES:  
 1. REFER TO SURVEY NO. 21-001.  
 2. SEE SHEET NO. 1 FOR SURVEY NOTES.



 US Army Corps of Engineers Jacksonville District SAFETY ON THIS JOB DEPENDS ON YOU	
Drawn by: WRM Checked: WRM	Designated by: GHR Date: DEC 2020
Project: ANNUAL EXAMINATION SURVEY FY21 STA. 1+00 CUT-C THRU STA. 8+00 CUT-F PLAN	Department of the Army Jacksonville District, Corps of Engineers Jacksonville, Florida
Scale: AS SHOWN Drawing no. <b>54</b> SHEET 54 OF 57	File name: 21-001-HR-BLSDGN





P.I. STA. 28+16.36 CUT-F  
P.I. STA. 0+00 CUT-G

STA. 25+00

STA. 20+00

STA. 15+00

STA. 10+00

RGE. -150

RGE. 00

RGE. 150

RGE. -150

RGE. 00

RGE. 150

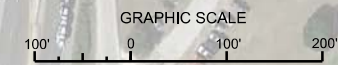
CUT-F

CUT-G

BACK RIVER

MATCHLINE SHEET NO. 056 STA. 10+00

MATCHLINE SHEET NO. 054 STA. 8+00



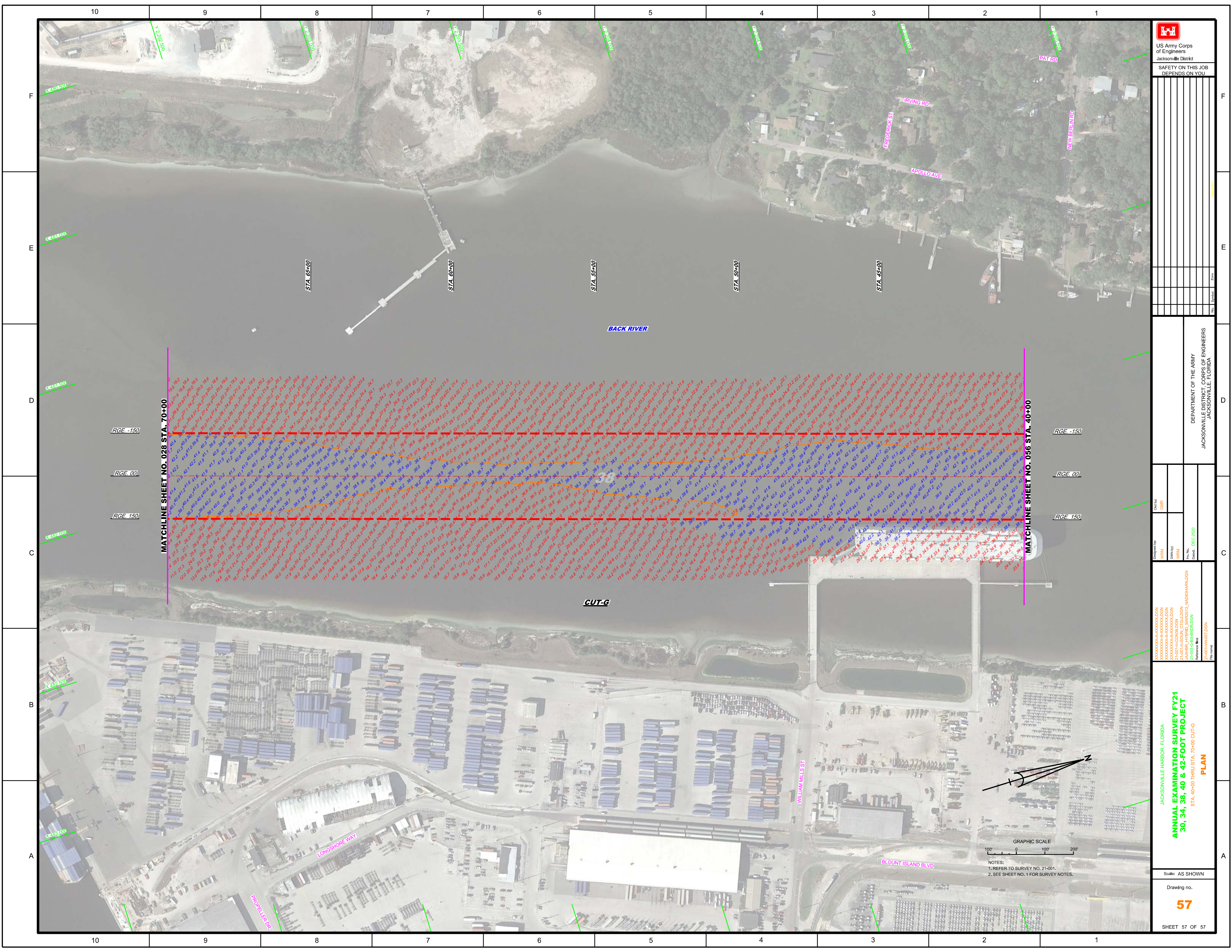
NOTES:  
1. REFER TO SURVEY NO. 21-001.  
2. SEE SHEET NO. 1 FOR SURVEY NOTES.

 US Army Corps of Engineers Jacksonville District SAFETY ON THIS JOB DEPENDS ON YOU	
Drawn by: WRM Check by: GHR	Date: DEC 2020
JACKSONVILLE HARBOR, FLORIDA <b>ANNUAL EXAMINATION SURVEY FY21 30, 34, 38, 40 &amp; 42-FOOT PROJECT</b> STA. 8+00 CUT-F THRU STA. 10+00 CUT-G <b>PLAN</b>	
Scale: AS SHOWN Drawing no. <b>55</b> SHEET 55 OF 57	









US Army Corps of Engineers  
 Jacksonville District  
 SAFETY ON THIS JOB  
 DEPENDS ON YOU

Checked By:	GHR
Designed By:	WRM
Drawn By:	WRM
Date:	DEC 2020

JACKSONVILLE HARBOR, FLORIDA  
 ANNUAL EXAMINATION SURVEY FY21  
 30, 34, 38, 40 & 42-FOOT PROJECT  
 STA. 40+00 THRU STA. 70+00 CUT-G  
 PLAN

Scale: AS SHOWN  
 Drawing no.  
**57**

GRAPHIC SCALE  
 100' 0 100' 200'  
 NOTES:  
 1. REFER TO SURVEY NO. 21-001.  
 2. SEE SHEET NO. 1 FOR SURVEY NOTES.